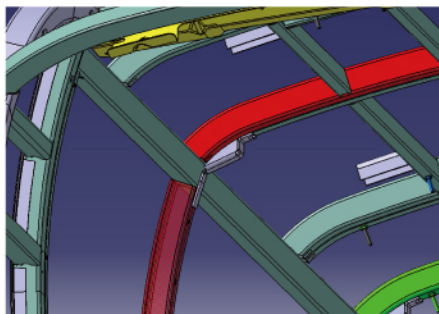
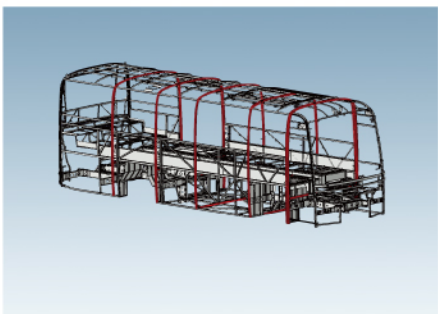
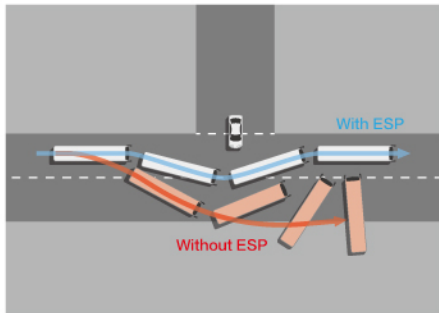


SAFETY & RELIABILITY, ENJOY CAREFREE OPERATION

Time witnesses quality and safety wins trust. Yutong ZK6907H builds products standing in the customer's point of view to ensure vehicle is reliable and durable throughout the entire life, and operation is safe and stable.



■ Y.E.S Whole Vehicle Electrophoresis

Validity of corrosion protection on structural parts is over 10 years, which makes the bus most reliable and durable.

■ Auxiliary Safety System

ESP, tire pressure monitoring and other safety systems are equipped as standard configurations, which improve vehicle stability and reduce driving risks.

■ High Strength Steel Ring Structure Bus Body

Unique Yutong high strength steel ring body makes bus structure safer. Deformation of vehicle body, in case of a collision, is less, ensuring effective protection of the driver and passengers inside. Adopting professional CAE analysis, targeted to improve the strength of the body.

■ Reinforced Crash Box

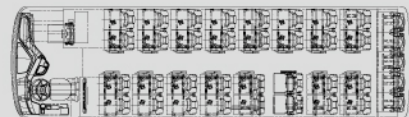
Newly designed crash box design adopted at connection area between roof frame and sidewall frame, which increases the frame anti-shear ability by 50%, greatly reducing deformation in case of rollover and roof impact.



ZK6907H

ITEM	PARAMETER
L*W*H (mm)	8,970*2,550*3,480
Wheel base (mm)	4,300
Minimum turning diameter (m)	≤17.5
Engine	YC6A270-50
Rated power (kw/rpm)	199/2,300
Rated torque (Nm/rpm)	1,100/1,300-1,600 (with gear torque limit 1000)
Displacement (L)	7.52
Emission	Euro V
Transmission	Fast 6DS-130 transmission
Clutch	SACHS clutch
Front axle	Maximum carrying capacity 4.5T, disc brake
Rear axle	Maximum carrying capacity 9T, drum brake
Brake system	KNORR ESP (including ABS, ASR function)
Tire	10R22.5 (Giti/Goodyear)
Suspension system	Air bag suspension
Air conditioning	24,000Kcal/h
Fuel tank capacity (L)	260
Seating capacity	37+1+1

Seat layout



37+1+1



Yutong Bus Co., Ltd.z

Yutong Marketing Center, Economic and Technological Development Zone, Zhengzhou, China, Tel: +86 371 6671 8999 Website: www.yutong.com E-mail: sales@yutong.com
Follow us on Facebook & Twitter & YouTube at Yutong Bus & Coach

The images may include items of optional equipment and accessories that are not installed as standard. The product is subject to technical improvement. Yutong reserves the right to change product specifications without prior notice.
All rights reserved. October, 2022 Edition.



ZK6907H | BRAND NEW 7-SERIES
DREAM BUS



APPEALING STYLING, THE SCENERY OF YOUR JOURNEY

Unique high-tech features are expressed throughout its appearance. Integrated with the latest fashion trend and breaking traditional boundary, the attractive styling enhances its exterior for a colorful journey. Fascinating figure creates eternal landscape. Full led front headlights, rear light combinations and fog lights, high brightness daytime running lights, flow dynamic turn lights (passenger vehicle class), which light up vibrant and colorful appearance.

COMFORT RIDING, EXPERIENCE THE EASE AND PLEASURE

ZK6907H focuses on passenger satisfaction and utilizes technology to offer pleasant comfort and convenience. Steady as a large vehicle but also agile as a small one, enjoy wonderful travel with utmost comfort and ease.



■ Passenger Zone ■ Read Lamp ■ A/C Outlet ■ LCD TV

- **Multi-functional Steering Wheel**
Small diameter, 10 function buttons, reduces operating load and makes driving more relaxed.
- **Ergonomic Dashboard**
Reasonable man-machine and electric buttons layout offers easy access within your arm's reach, which keeps with driving habits.
- **Integrated Central Control Panel**
Sedan design, integrated audio and video playback, reverse monitoring, Bluetooth connectivity, car play and other functions, which is full of the sense of science and technology.
- **Passenger Vehicle Type Short Shift Lever**
Arranged on instrument panel, which makes it easier to operate and free up more space.



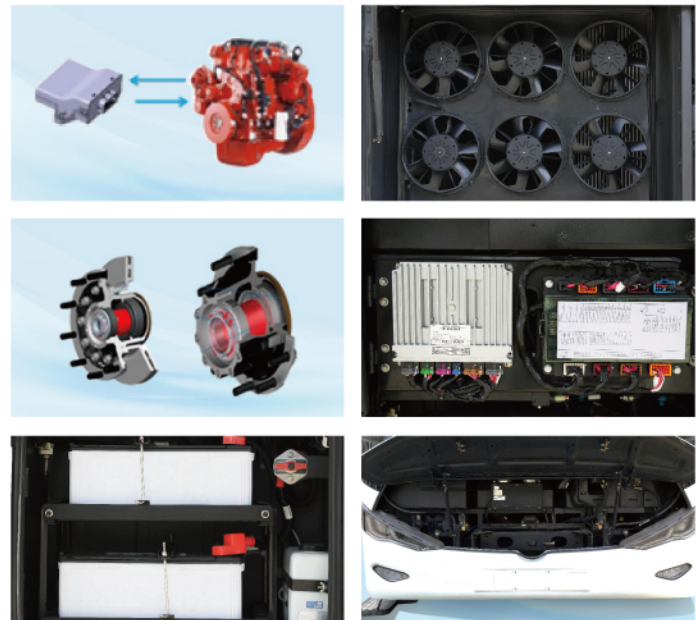
OPERATION ADVANTAGES, CREATE BETTER VALUE

With years of in-depth research in bus manufacturing field, Yutong accurately understand the actual needs of operator. Yutong has optimized key operational dimensions of ZK6907H, such as economy and convenience, to create more value to customers.

- **Saving Energy and Reducing Consumption, Reflect Better Value**

Yutong adopts technological innovation to reduce vehicle fuel consumption significantly, thus comprehensively improving customer value.

 - **Blue Core Intelligent Fuel Saving System**
Fuel consumption is reduced as compared to vehicle without this system.
 - **Electronic Fan Cooling System**
Engine II thermal management system adopts electronic fan cooling, making fuel consumption much lower than that with traditional electromagnetic fan.
- **Cutting-edge Design, Easy to Maintain**
 - **Maintenance-free Integrated Wheel Edges for Front and Rear Axles**
Maintenance-free up to 800,000 kms, maintenance times are reduced.
 - **Rotary Type Electrical Box**
Electric parts can be inspected and maintained conveniently and quickly.
 - **Pulling Type Maintenance-free Battery**
The whole battery can be pulled out easily.
 - **Tumblet Type Cowl Panel Structure**
Daily maintained parts, quick-wear parts and consumable part are easily accessible for quick repair and maintenance.



Large Capacity, Improved Profitability
4.0m³ through-type luggage compartment accommodates more luggage easily and makes passenger travel more comfortable (Note: Luggage compartment capacity varies with each configuration, please refer to actual vehicle specification.)